

HuaTian

HPT-4

Instruction:

HPT-4 explosion proof transmitter features the latest advances in transducer technology. Through long-term aging and stability testing, the whole product's performance is stable and reliable. The product is suitable for rugged environment, and could be widely used for process and pressure measure of petroleum, hemi-industry, metallurgy, power station, textile industry, and environment control, etc.

Features:

- Anti-explosion
- Fully digital signal processing
- Software correction of Zero point, full range
- Anti electromagnetic interference Design
- Suitable for harsh environment

Applications:

- Hydraulic/Pneumatic Control Systems
- Chemical
- Power Generation
- Process control
- Oil and gas



● Specifications (Thermal drift refer to 25℃ output)

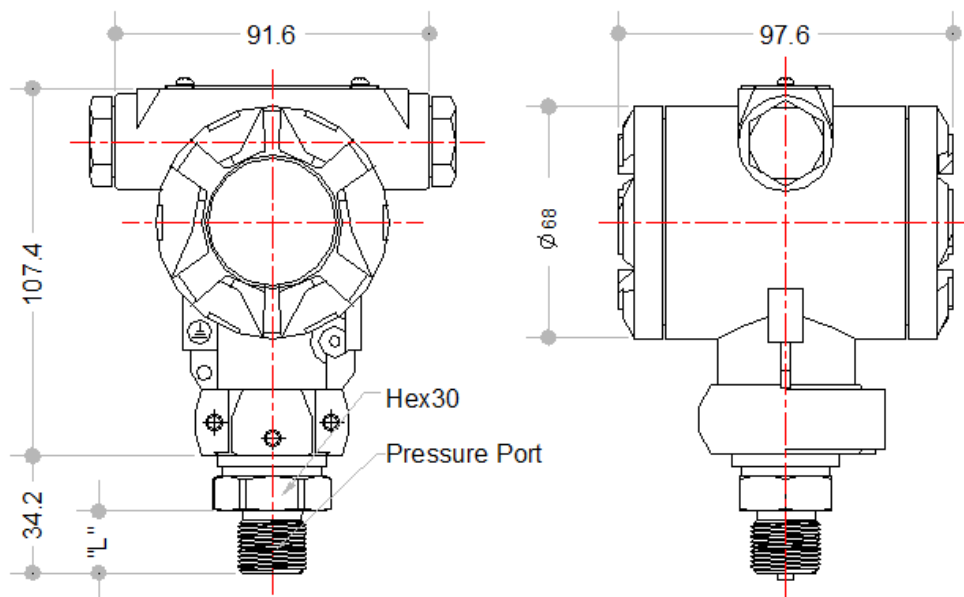
| | | | |
|---|---------------------------------------|-----------------------------|----------------------------------|
| Sensor Type | Piezoresistive | Operable Temp. (℃) | -20~85℃ |
| Wetted parts | 316L Stainless steel | Storage Temp (℃) | -20℃...125℃ |
| Sealing method | O-Ring | Long term stability(annual) | ±0.25%FS(Typical) |
| Housing material | Aluminum | Zero error (%FS) | ±0.5% |
| Damping | Adjustable | Full range error (%FS) | ±0.5% |
| Connector Outlet | IP66 | Thermal Zero drift (%FS) * | ±2.0% |
| Pressure port | See below code description | Thermal Span drift (%FS) * | ±2.0% |
| Accuracy (Combined Non-linearity, Hysteresis and Non-repeatability) %FS | 0.5%(Typical),0.25%,0.1% | Input Voltage / Output | See below code description |
| | | Response | 1KHz |
| Pressure Range(Bar) | 0~0.1...600Bar | Insulation | Min1MΩ @250VDC&25℃ |
| | | Shock | 100g, 11msec |
| Over pressure | 3X Full Range | Noise | < 2m VRMS |
| Burst pressure | 4X Full Range or 20kpsi which is less | Pressure reference | Absolute /Vent Gauge/ Seal Gauge |
| Life | >10 ⁷ Full Range Pressure | Weight | 950g Max. |

HuaTian

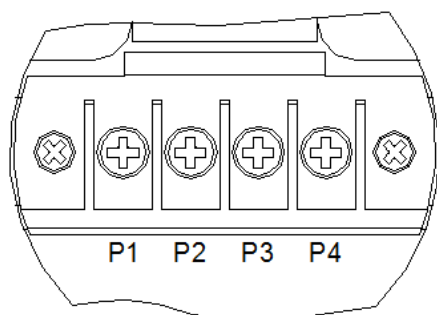
HPT-4

| HPT-4 pressure transducer model code | | | | | | | | |
|--------------------------------------|--|---------------|------------------|----------------|---------------|--------------|--------------------|--------------|
| Model | Description | | | | | | | |
| HPT-4 | Anti-explosion industrial pressure transmitter | | | | | | | |
| | Range/Code | Pressure unit | | | | | | |
| | 0-X P | Pa | | | | | | |
| | 0-X K | Kpa | | | | | | |
| | 0-X B | Bar | | | | | | |
| | 0-X M | Mpa | | | | | | |
| | 0-X S | PSI | | | | | | |
| | 0-X m | Mh2o | | | | | | |
| | | Code | Output Signal | | | | | |
| | | E | 4-20mA two wires | | | | | |
| | | Z | others | | | | | |
| | | | Code | Accuracy (%FS) | | | | |
| | | | J1 | 0.1 | | | | |
| | | | J2 | 0.25 | | | | |
| | | | J3 | 0.5 | | | | |
| | | | | Code | Pressure port | | | |
| | | | | C1 | M20*1.5 | | | |
| | | | | C3 | G1/2 | | | |
| | | | | C4 | G3/8 | | | |
| | | | | C5 | G1/4 | | | |
| | | | | C6 | 1/2NPT | | | |
| | | | | C7 | 1/4NPT | | | |
| | | | | C8 | ZG1/4 | | | |
| | | | | X | Customized | | | |
| | | | | | Code | I/O Outlet | | |
| | | | | | B1 | Direct cable | | |
| | | | | | X | Customized | | |
| | | | | | | Code | Pressure reference | |
| | | | | | | G | Vent Gauge | |
| | | | | | | A | Absolute | |
| | | | | | | | Code | Others |
| | | | | | | | B | EXIAII CT6 |
| | | | | | | | G | EXIAII CT6Gb |
| Example: | | | | | | | | |
| HPT-4 | 10B | E | J2 | C3 | X | G | B | |
| HPT-4 | 10Bar | 4-20mA | 0.25% | G1/2 | Customized | Gauge | CT6 | |
| Model Choose:HPT-4-10B-EJ2C3XGB | | | | | | | | |

Outline Drawing:

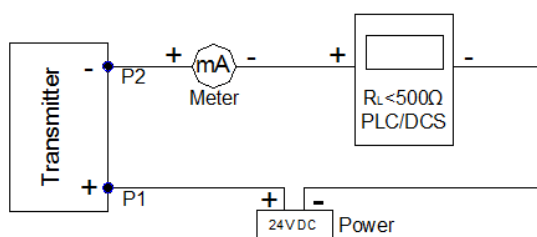


Electric Circuit:

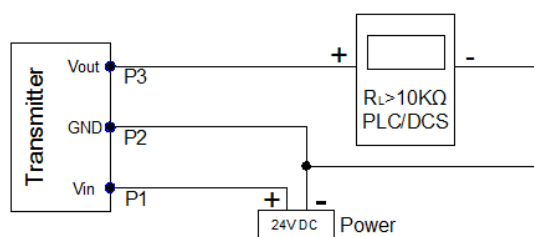


| Pin | 2-Wire (Current) |
|-----|------------------|
| 1 | Vsupply+ (Vs+) |
| 2 | Vsupply- (Vs-) |
| 3 | NC |
| 4 | NC |

| Pin | 3-Wire (Voltage) |
|-----|------------------|
| 1 | Vsupply+ (Vs+) |
| 2 | GND |
| 3 | Voutput+ (Vo+) |



Output: 4-20mA



Output: 1-5V

Pressure Port Dimension:

| Code | Pressure port | "L" (mm) |
|------|---------------|----------|
| C1 | M20*1.5 | 16 |
| C2 | M14*1.5 | 14 |
| C3 | G1/2 | 16 |
| C4 | G3/8 | |
| C5 | G1/4 | 12 |
| C6 | 1/2NPT | |
| C7 | 1/4NPT | 13.8 |
| C8 | ZG1/4 | 13.8 |