

HuaTian

HPT-35

Introduction:

HPT-35 Submersible transmitter(High Temperature) was designed for high temperature application and strong corrosive industry .This product can operate in temperature range from -30-250°C. Yet, even in these difficult high temperatures, they provide outstanding accuracy, long-term calibration stability and reliability.

Features:

- Zero point and the full rang adjustable
- Good corrosion resistance
- Suitable for small and medium scale level
- Unique design, pressure guide structure
- Suitable for high temperature: -30~250°C

Applications:

- Dye and pulps
- Level measurement in container
- Sewage
- Water recycling
- Fuel storage and tank farm



Specifications(Refer to 25°C)

Sensor Type	Piezoresistive	Operable Temp. (°C)	-20~85°C
Wetted parts	316L Stainless steel	Compensation Temp (°C)	0-60°C
Housing	SS304 or 316L	Storage Temp (°C)	-20°C...125°C
Junction box	Cast aluminum	Long term stability	±0.10%FS(annual)
Sealing method	Welding	Zero error (%FS)	±0.5%
Cable Outlet	IP65	Full range error (%FS)	±0.5%
Connector Outlet	IP68	Thermal Zero drift (%FS) *	±1.0%
Response	1KHz	Thermal Span drift (%FS) *	±1.0%
Accuracy (Combined Non-linearity, Hysteresis and Non-repeatability) %FS	0.5%(Typical)	Pressure reference	Absolute /Vent Gauge/ Seal Gauge
Over pressure	3X Full Range	Input Voltage / Output	See below code description
Pressure Range(Mh2o)	0...1...20	Insulation	Min1MΩ @250VDC&25°C
Life	>10 ⁷ Full Range Pressure	Shock	100g, 11msec
Burst pressure	4X Full Range or 20kpsi which is less	Noise	< 2m VRMS
		Weight	950g Max.

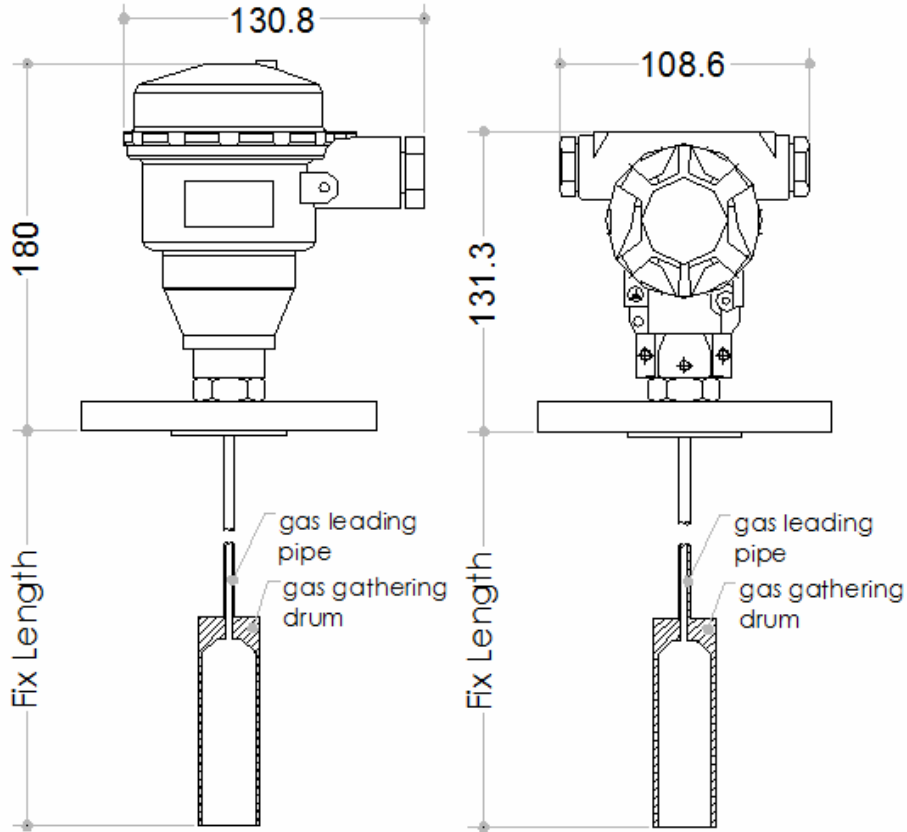
- Thermal drift refer to 25°C output

HuaTian

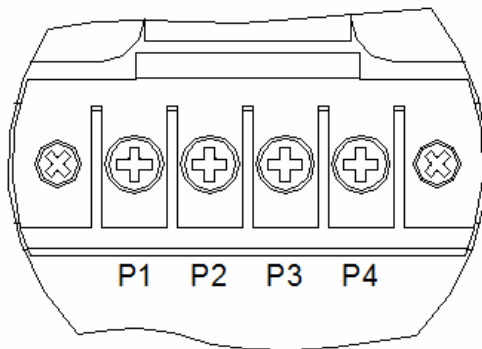
HPT-35

HPT-35 pressure transducer model code							
Model	Description						
HPT-35	High temperature level transmitter						
	Range/Code	Pressure unit					
	0-X P	Pa					
	0-X K	Kpa					
	0-X B	Bar					
	0-X M	Mpa					
	0-X S	PSI					
	0-X m	Mh2o					
		Code	Output Signal				
		E	4-20mA two wire				
		J	0-5V DC				
		Q	0-10V DC				
		Z	others				
			Code	Accuracy(%FS)			
			J1	0.1			
			J2	0.25			
			J3	0.5			
				Code	I/O Outlet		
				B3			
				X	Customized		
					Code	Pressure reference	
					G	Vent Gauge	
					A	Absolute	
						Code	Flange
						D1	DN50
						D2	DN25
						D3	Customized
Example:							
HPT-35	10K	E	J2	X	G	D1	
HPT-35	10Kpa	4-20mA	0.25%	Customized	Gauge	DN50	
Model Choose:HPT-35-10B-EJ2XGD1							

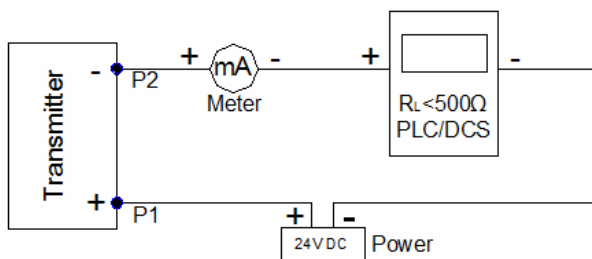
Outline Drawing:



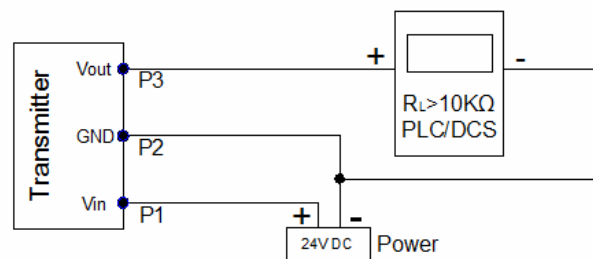
Electric Circuit:



Pin	2-Wire (Current)
1	Vsupply+ (Vs+)
2	Vsupply- (Vs-)
3	NC
4	NC
Pin	3-Wire (Voltage)
1	Vsupply+ (Vs+)
2	GND
3	Voutput+(Vo+)



Output: 4-20mA



Output: 1-5V